



Your Touchstone Energy®  
Cooperative



S E P T E M B E R

# 2025

## PLUGGED IN WITH ...

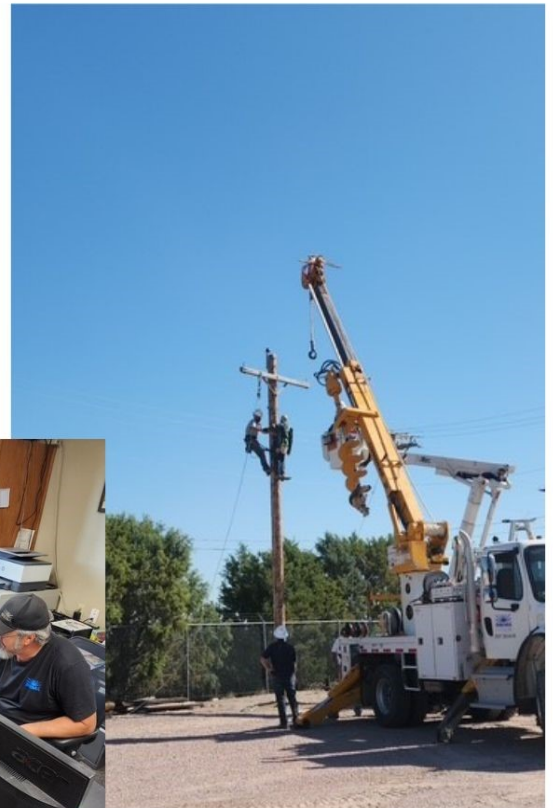
Panhandle Rural Electric  
Membership Association

<b>Cover Story</b>	<b>1</b>
<b>Working Together</b>	<b>2</b>
<b>Farm Smart</b>	<b>2</b>
<b>Water Donations</b>	<b>3</b>
<b>Load Management</b>	<b>4</b>

## Annual Pole Top Rescue Training

A pole-top rescue is necessary when something has happened that has caused a line worker to become unconscious, unresponsive, or otherwise unable to descend the pole on their own.

Once a year operations goes through pole-top rescue training so in the event that if a real emergency arises the crews will be more confident in their ability doing so.



308-762-1311 or 800-585-4837  
FAX 308-762-5750



[www.prema.coop](http://www.prema.coop)





# WORKING TOGETHER



## BOX BUTTE COUNTY BIT & BOOT ARENA

PREMA in conjunction with CoBank Sharing Success Program came together in July to donate \$5,000 to the Box Butte County Fair Board. This donation went towards the improvements made to the Bit & Boot Arena in Hemingford. The hopes are for all ages to be able to utilize this arena by partaking in various events that will take place over the years. The finished product looked great!



Pictured above is Micki Votruba with PREMA's General Manager, Zac Bryant.

## Sharing In The Success!




## FARM SMART: 5 Safety Tips for Kids



Farms and ranches are full of valuable lessons — but also serious risks, especially for kids. **More young people die working in agriculture than in all other industries combined**, often due to taking on tasks beyond their abilities.

**Five ways to keep kids safe around equipment, animals and chores:**

- 1 Keep kids off tractors.**  
Tractors cause more than 40% of fatal farm accidents involving children. Most kids are not tall or strong enough to operate them safely. Only let youth operate tractors if they meet age, size and maturity guidelines.
- 2 Supervise and restrict access.**  
Never leave young children alone near work zones. Lock or fence off danger zones like grain bins, pens and machinery.
- 3 Assign age-appropriate chores.**  
Match tasks to age and maturity. Teens may take risks, so set clear rules and supervise closely.
- 4 Create a safe environment.**  
Eliminate slip hazards, lock up keys, limit heavy lifting and provide protective gear like gloves, non-slip shoes and hearing protection.
- 5 Model safe behavior.**  
Teach tasks step-by-step and demonstrate safe habits — kids learn by watching adults.  
  
Make safety a family priority so future generations can enjoy the rewards of farm life with less risk.

 **Safe  
Electricity.org**



# PREMA APPRECIATES ALL THE VOLUNTEER FIREFIGHTERS

PREMA donated drinking water to four local volunteer fire departments within our service territory. We know the importance of the men and women who volunteer and wanted to do something to show our appreciation.

- Arthur County Fire & Rescue
- Heart of the Hills
- Hemingford Volunteer Fire Department
- Sandhills Rural Fire Protection District

Pictured below from Heart of the Hills L-R is PREMA's Operations Manager; Boone Manion, Ed Dentler, Bob Doggett, Butch Black, PREMA's General Manager; Zac Bryant and PREMA's Board President; RD Sutphen.



Pictured above L-R is PREMA's Operations Manager; Boone Manion, Mark Clemke, Shad Bryner and PREMA's General Manager, Zac Bryant.



Sandhills Rural Fire Protection District



Arthur County Fire And Rescue

OFFICE HOURS  
FOR THE WEEK OF  
SEPTEMBER 1<sup>ST</sup> - 5<sup>TH</sup>

**MONDAY CLOSED**  
**TUESDAY - FRIDAY**  
6:30am - 3:30pm

Any Questions Call The Office @ (308)762-1311

## Notes From Load Management

All participants in Load Management can be controlled every day for the month of September. Control will start on Tuesday September 2<sup>nd</sup>, as there is no control on Sundays and Holidays. Groups will be controlled as needed. We do not anticipate control days to extend past September 15.

Be sure to look over your disconnect boxes and well panels to insure proper operation. If you are an irrigator with PREMA and have not participated in Load Management in the past, information is available at [www.prema.coop](http://www.prema.coop) under the irrigation tab or by calling the office at 308-762-1311.



Serving Arthur, Box Butte, Cherry, Dawes, Garden, Grant, Hooker,  
McPherson, Morrill, Sheridan and Sioux Counties

### **PREMA**

251 BRAYTON ROAD  
P.O. BOX 677  
ALLIANCE, NE 69301-0677

### **MANAGEMENT**

Zac Bryant—General Manager  
Boone Manion—Operations Manager  
Dale Knapp—Staking Engineer

### **BOARD OF DIRECTORS**

Michael Collins	Alliance
Wayne Crawford	Alliance
Chris Cullan	Hemingford
Marty Larsen	Whitman
Bryan Monahan	Hyannis
RD Sutphen	Lakeside
Phil Zochol	Alliance

(308) 762-1311 or 800-585-4837  
FAX—(308) 762-5750