

August 2021

PLUGGED IN WITH . . .

Panhandle Rural Electric Membership Association

Cover Story	1
July 9th Storms	2
Back to School	3
Capital Credit Notice	3
National 811 Day	4



ENERGY EFFICIENCY CREDITS-REBATES PUTTING MONEY BACK IN YOUR POCKET

Energy Efficiency Credits (EEC) are offered with the stipulation that no other credits, rebates or special rates/discounts apply. All rebates require a copy of the paid receipt.

All EEC rebates must be requested within 120 days of installation. All appliances must be Energy Star rated.

- Energy Star Rated Appliance Rebates From \$20.00 to \$90.00
Refrigerators, freezers, clothes washers, clothes dryers, and microwaves.
- LED lighting rebates
- Electric Water heaters and heat pump water heaters
From \$50.00 to \$370.00
- Energy Star Split A/C systems- \$100.00
- Electric heat pump: \$425-\$600/ton
- Electric Heat Pumps: NEW Construction \$750/ton
Replacements \$375/ton

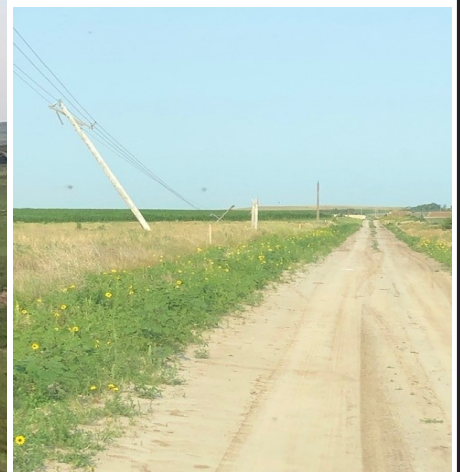
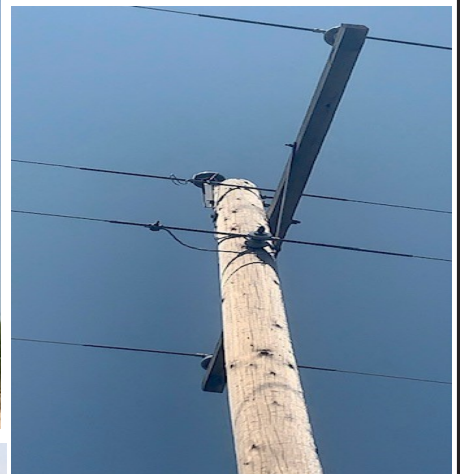
OUTDOOR POWER EQUIPMENT:

Battery and corded electric equipment only

Minimum purchase price of \$50.00

- 25% of cost up to \$150.00 for mowers & snow blowers,
- 25% of cost up to \$50.00 for trimmers, chainsaws, leaf blowers & power washers
- Commercial accounts also qualify for LED lighting Rebates, refrigerated case/walk in coolers, commercial and industrial motors.

July 9th Back-To-Back Storms Bring Outages For The PREMA Service Area



Thank you to all our consumers for your patience and understanding during these times. A quick reminder if you change phone numbers or eliminate your land line please call the office so we can update our information to better serve you.



BACK to SCHOOL

Be SAFE Be SMART

- Watch for school zones
- Put your phone away – don't get distracted
- Drop off and pick up in designated areas
- Carpool so there are less vehicles on the road
- Watch for children around parked cars
- Stop for buses loading or unloading students
- Watch for warning signs and signals

For more Back to School Safety Tips go to:
<https://www.nhtsa.gov/back-school-safety>



Watch for school zones: It is easy to forget about the school zones locally after such a long break of not having to pay attention. Watch for school zones, children, and parents who may be walking to school.

Put your phone away: While driving in uniform avoid answering texts or calls or speeding through a school zone may reflect poorly on the military. Don't be distracted by messages and calls.

Drop off and pick up: Use the designated areas, don't just drop off and pick up across the street from the school.

Carpool: Parents can organize or find a carpool to help reduce the number of vehicles on the road.

Look out: Children can be unpredictable, slow down and look between parked cars.

School busses: Stop your vehicle when approaching at stopped school busses that are either loading or unloading students, be on the lookout for warning signs and signals. Do not proceed until the school bus resumes motion, the driver signals you to proceed, or the visual signal is no longer activated.

Lanes: If a road is only divided by a left-turning lane, drivers on both sides must stop for school buses with red flashing lights. If lanes are separated by an intervening space or physical barrier only drivers going in the same direction as the bus must stop.

Reflection: To make children more visible, have them wear reflective material during hours of darkness or near darkness.

Notice

Capital Credit checks were mailed October 1, 2020, numerous checks have not been cashed. Please cash your check by August 31, 2021 as the uncashed checks will be voided September 1, 2021. If you are unable to locate your uncashed check, please send a request for a check re-issue to Allison at billing@prema.coop or mail to P.O. Box 677, Alliance, NE 69301.



Dial 811 from anywhere in the country a few days prior to digging, and your call will be routed to your local One Call Center. Tell the operator where you're planning to dig, what type of work you will be doing and your affected local utilities companies will be notified about your intent to dig. In a few days, they'll send a locator to mark the approximate location of your underground lines, pipes and cables, so you'll know what's below - and be able to dig safely. Remember, always call 811 before you start any digging project! You'll avoid injury, expense, embarrassment - and a very inconvenient day in the dark. For more information on your local One Call Center, or to make an online request for utilities to be marked (where available).



Serving Arthur, Box Butte, Cherry, Dawes, Garden, Grant, Hooker, McPherson, Morrill, Sheridan and Sioux Counties

PREMA

251 BRAYTON ROAD
P.O. BOX 677

ALLIANCE, NE 69301-0677

OPERATIONS AND STAFF

Ryan Reiber—General Manager
Paul Grosz—Operations Manager
Dale Knapp—Staking Engineer

BOARD OF DIRECTORS

Dale Berndt — Lakeside
Michael Collins — Alliance
Wayne Crawford — Alliance
Marty Larsen — Whitman
Bryan Monahan — Hyannis
RD Sutphen — Lakeside
Phil Zochol — Alliance
(308) 762-1311 or 800-585-4837
FAX—(308) 762-5750

